



Parkfield Crescent, Kimpton, Hitchin, SG4 8EQ Guide Price £525,000 Freehold

Frost's

Offered for sale with no upper chain is this four bedroom extended family home nestled in a cul de sac fronting a green, ideally placed within 0.2 miles to the village school.

Kimpton village is situated three miles north of Wheathampstead and five miles from Harpenden and has a number of local amenities including a shop/post office and a pub. This property is just a short car or bus ride away from both Harpenden and St Albans highly regarded schools and mainline railway stations.

Energy Rating Awaited

Council Tax Band E

Freehold





Features

- Four Bedrooms
- Living Room
- Separate Dining Area
- Fitted Kitchen / Breakfast Room
- Cloakroom
- Family Bathroom
- Private Rear Garden
- Single Garage
- No Upper Chain



A four bedroom extended family home nestled in a cul de sac overlooking a green





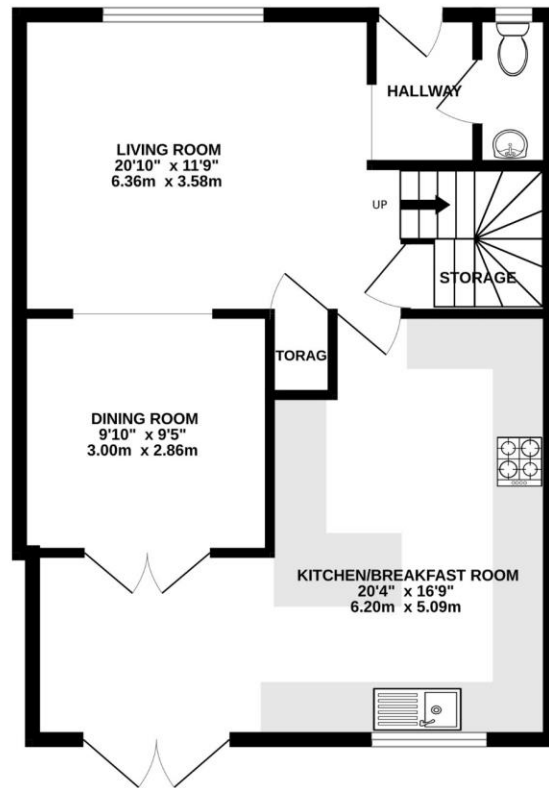
The property is being sold with no upper chain



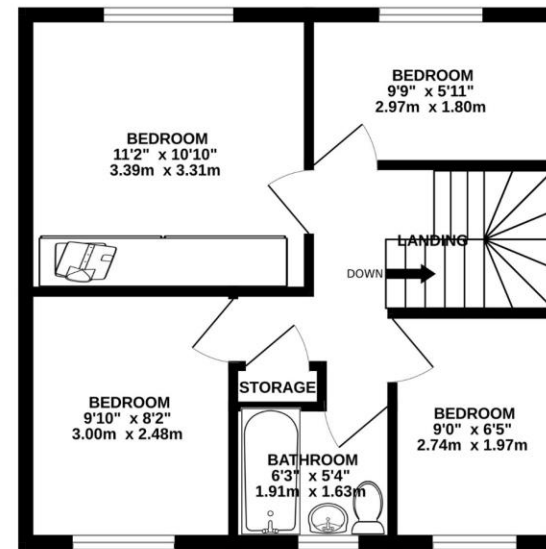




GROUND FLOOR
590 sq.ft. (54.8 sq.m.) approx.



1ST FLOOR
432 sq.ft. (40.1 sq.m.) approx.



TOTAL FLOOR AREA : 1022 sq.ft. (94.9 sq.m.) approx.

Whilst every attempt has been made to ensure the accuracy of the floorplan contained here, measurements of doors, windows, rooms and any other items are approximate and no responsibility is taken for any error, omission or mis-statement. This plan is for illustrative purposes only and should be used as such by any prospective purchaser. The services, systems and appliances shown have not been tested and no guarantee as to their operability or efficiency can be given.

Made with Metropix ©2024

Wheathampstead Office | 01582 833444 | wheathampstead@frosts.co.uk | 4 High Street, Wheathampstead, AL4 8AA

These particulars are a general guide only. They do not form part of any contract. Services, systems and appliances have not been tested. Other important information which you will need to know about this property can be found at frosts.co.uk. We may refer you to recommended providers of ancillary services such as Conveyancing, Financial Services, Insurance and Surveying. We may receive a commission payment fee or other benefit (known as a referral fee) for recommending their services. You are not under any obligation to use the services of the recommended provider. The ancillary service provider may be an associated company of Frost's Estate Agents.

To conform with the Money Laundering Regulations 2019, we are required to confirm the identity of all clients. We use the services of Lifetime Legal Ltd who will contact you directly at an agreed time to do this. There is a nominal charge of £60 including VAT per transaction payable direct to Lifetime Legal. We are unable to commence marketing before checks are complete.

