



Hawthorn Close, Harpenden, Hertfordshire, AL5 1HN

Guide Price £1,100,000

Freehold

Frost's

*A five bedroom detached family home extending to over 2,100 sq. ft. of accommodation situated in a cul-de-sac location in the Southdown area of Harpenden.*

## Features

- Five Bedrooms
- Two Bathrooms
- Kitchen/Breakfast Room
- Driveway and Garage
- Approximately 2,150 sq.ft
- Energy Rating C
- Council Tax Band G
- Freehold





*Kitchen/breakfast room with space for homeworking.*





*Extending to over 2,100 sq. ft. of accommodation.*











*Rear garden with patio area and lawn.*



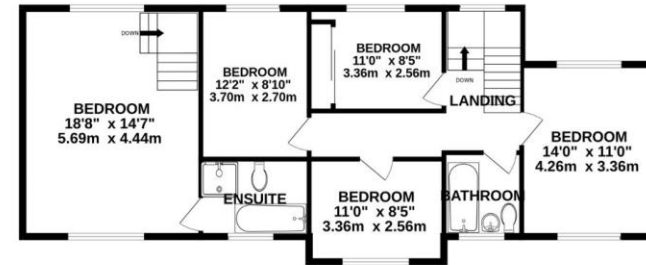




GROUND FLOOR  
1212 sq.ft. (112.6 sq.m.) approx.



1ST FLOOR  
940 sq.ft. (87.3 sq.m.) approx.



TOTAL FLOOR AREA : 2152 sq.ft. (199.9 sq.m.) approx.

Whilst every attempt has been made to ensure the accuracy of the floorplan contained here, measurements of doors, windows, rooms and any other items are approximate and no responsibility is taken for any error, omission or mis-statement. This plan is for illustrative purposes only and should be used as such by any prospective purchaser. The services, systems and appliances shown have not been tested and no guarantee as to their operability or efficiency can be given.  
Made with Metropix ©2023

Harpenden Office | 01582 768666 | harpenden@frosts.co.uk | 6A Leyton Road, Harpenden, AL5 2TL

These particulars are a general guide only. They do not form part of any contract. Services, systems and appliances have not been tested. Other important information which you will need to know about this property can be found at frosts.co.uk. We may refer you to recommended providers of ancillary services such as Conveyancing, Financial Services, Insurance and Surveying. We may receive a commission payment fee or other benefit (known as a referral fee) for recommending their services. You are not under any obligation to use the services of the recommended provider. The ancillary service provider may be an associated company of Frost's Estate Agents.

To conform with the Money Laundering Regulations 2019, we are required to confirm the identity of all clients. We use the services of Lifetime Legal Ltd who will contact you directly at an agreed time to do this. There is a nominal charge of £60 including VAT per transaction payable direct to Lifetime Legal. We are unable to commence marketing before checks are complete.

