



High Street, Kimpton, Hitchin, SG4 8RA

Guide Price £550,000

Freehold

Frost's

This three bedroom terraced cottage, built before 1900, is situated on the High Street in the village of Kimpton.

The property is located 0.12 miles from Kimpton Primary School.

Features

- Three Bedrooms
- Two Reception Rooms
- First Floor Bathroom
- Approx. 985 SqFt
- Paved Front Garden
- Shared Side Access
- Rear Garden with Office
- External Workshop
- Single Step Access
- Energy Rating E
- Council Tax Band D
- Freehold

Agent Note

No.19 has a right of way across the side access.





Beautifully presented throughout.



The added benefit of an external office and workshop.



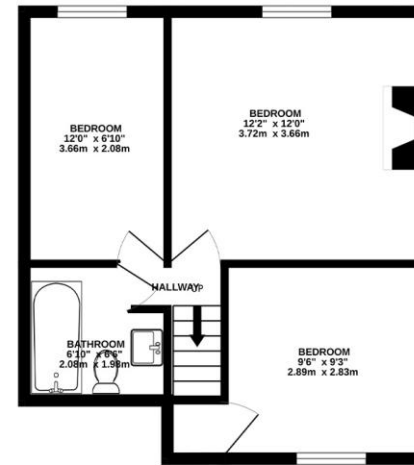




GROUND FLOOR
55.4 sq. m. (597 sq. ft.) approx.



1ST FLOOR
36.0 sq. m. (388 sq. ft.) approx.



TOTAL FLOOR AREA : 91.5 sq. m. (985 sq. ft.) approx.

Whilst every attempt has been made to ensure the accuracy of the floorplan contained here, measurements of doors, windows, rooms and any other items are approximate and no responsibility is taken for any error, omission or mis-statement. This plan is for illustrative purposes only and should be used as such by any prospective purchaser. The services, systems and appliances shown have not been tested and no guarantee as to their operability or efficiency can be given.
Made with Metropix ©2020

Wheathampstead Office | 01582 833444 | wheathampstead@frosts.co.uk | 4 High Street, Wheathampstead, AL4 8AA

These particulars are a general guide only. They do not form part of any contract. Services, systems and appliances have not been tested. Other important information which you will need to know about this property can be found at frosts.co.uk. We may refer you to recommended providers of ancillary services such as Conveyancing, Financial Services, Insurance and Surveying. We may receive a commission payment fee or other benefit (known as a referral fee) for recommending their services. You are not under any obligation to use the services of the recommended provider. The ancillary service provider may be an associated company of Frost's Estate Agents.

To conform with the Money Laundering Regulations 2019, we are required to confirm the identity of all clients. We use the services of Lifetime Legal Ltd who will contact you directly at an agreed time to do this. There is a nominal charge of £60 including VAT per transaction payable direct to Lifetime Legal. We are unable to commence marketing before checks are complete.

