



Beech Way, Wheathampstead, St. Albans, AL4 8LY Guide Price £1,000,000 Freehold

Frost's

An impressive four bedroom extended detached family home occupying a generous plot in this quiet and sought after cul de sac, Ideally located in the hamlet of Blackmore End within walking distance of Mid Herts Golf course, Gustard Wood Common and surrounding countryside.

An entrance hallway leads to a sizable living room that has a feature fireplace and bay window giving access and views over the rear garden. A separate dining room overlooks the front garden and is perfect for formal dining. Other features include a cloakroom, a large fitted kitchen leading onto a useful utility room.

On the first floor the landing leads to four double bedrooms and a good size family bathroom. The main bedroom benefits from having its own en suite shower room.

Externally the beautifully kept front garden has lawned areas, mature trees, shrubs and well stocked borders, a large driveway provides ample parking and access to the detached double garage. The south facing mature landscaped rear garden extends to the side of the house and features a patio seating area, well-tended lawn with various flowers and shrubs to borders. There is also a vegetable plot which runs along the side of the house too.

Energy Rating C

Council Tax Band G

Freehold





Features

- Four Double Bedrooms
- Generous Plot in a Quiet Cul de Sac
- Sizeable Living Room with Feature Fireplace
- Separate Dining Room
- Cloakroom
- Fitted Kitchen and Useful Utility Room
- Main Bedroom with En-Suite Shower Room
- Front Garden and Large Driveway
- Detached Double Garage
- South Facing Landscaped Rear Garden



*An impressive four bedroom
extended detached family home
occupying a generous plot*





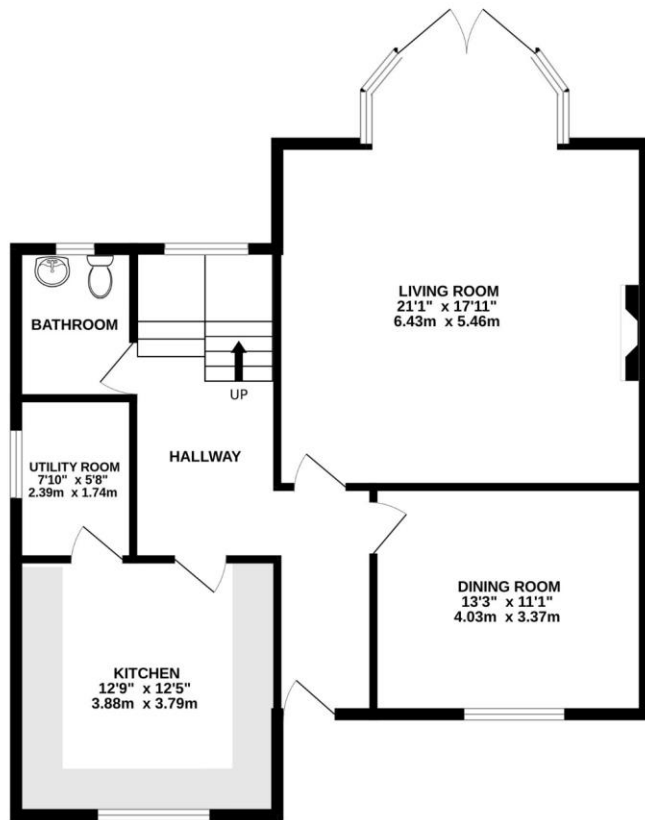
*Mature Landscaped South-Facing
Rear Garden*



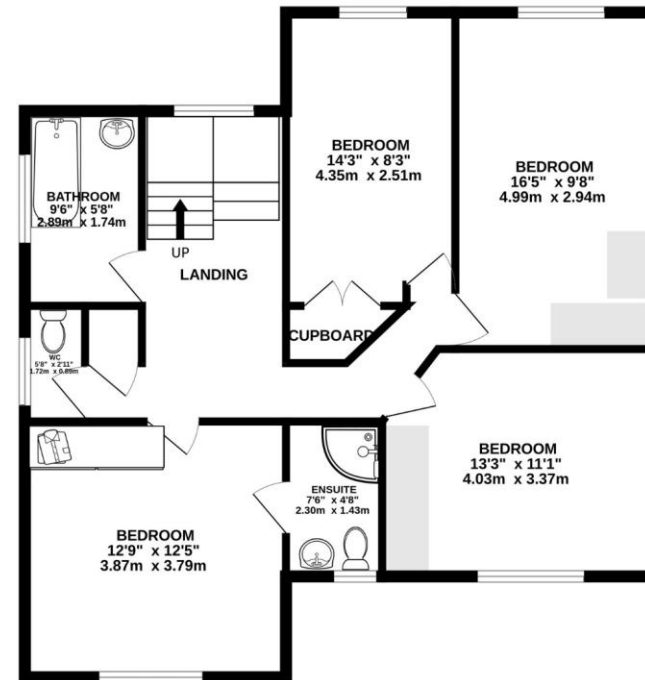




GROUND FLOOR
883 sq.ft. (82.0 sq.m.) approx.



1ST FLOOR
842 sq.ft. (78.2 sq.m.) approx.



TOTAL FLOOR AREA : 1724 sq.ft. (160.2 sq.m.) approx.

Whilst every attempt has been made to ensure the accuracy of the floorplan contained here, measurements of doors, windows, rooms and any other items are approximate and no responsibility is taken for any error, omission or mis-statement. This plan is for illustrative purposes only and should be used as such by any prospective purchaser. The services, systems and appliances shown have not been tested and no guarantee as to their operability or efficiency can be given.
Made with Metropix ©2024

Wheathampstead Office | 01582 833444 | wheathampstead@frosts.co.uk | 4 High Street, Wheathampstead, AL4 8AA

These particulars are a general guide only. They do not form part of any contract. Services, systems and appliances have not been tested. Other important information which you will need to know about this property can be found at frosts.co.uk. We may refer you to recommended providers of ancillary services such as Conveyancing, Financial Services, Insurance and Surveying. We may receive a commission payment fee or other benefit (known as a referral fee) for recommending their services. You are not under any obligation to use the services of the recommended provider. The ancillary service provider may be an associated company of Frost's Estate Agents.

To conform with the Money Laundering Regulations 2019, we are required to confirm the identity of all clients. We use the services of Lifetime Legal Ltd who will contact you directly at an agreed time to do this. There is a nominal charge of £60 including VAT per transaction payable direct to Lifetime Legal. We are unable to commence marketing before checks are complete.

