



Crawley Close, Slip End, Luton, LU1 4BT

Guide Price £425,000

Freehold

Frost's

A well presented three bedroom family home situated in a cul-de-sac location in the popular Bedfordshire village of Slip End.

On the ground floor there is an open plan living/dining room and separate fitted kitchen, whilst the garage has also been converted into a study and utility room. On the first floor there are three good sized bedrooms and a family bathroom. Outside the house is a driveway to the front providing off street parking, whilst to the rear is a low maintenance garden with modern home office.

Crawley Close is a short walk away from the centre of the village, which includes two pubs and a local shop, and is a village with a strong community feel with its Village Hall and playing fields together with numerous activities to suite all ages and tastes. The nearby town of Harpenden is just a short drive away with more comprehensive amenities. Slip End also offers great commuter links with the M1 nearby offering access to London and the North.

Energy Rating C

Council Tax Band D

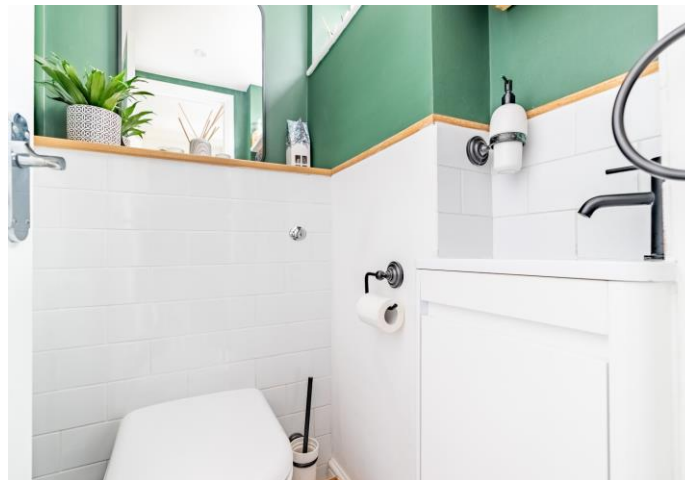
Freehold





Features

- Three Bedrooms
- Cul de Sac Location
- Open Plan Living/Dining Room
- Separate Fitted Kitchen
- Converted Garage
- Driveway
- Low Maintenance Rear Garden
- Modern Home Office



A well presented three bedroom family home situated in a cul-de-sac location

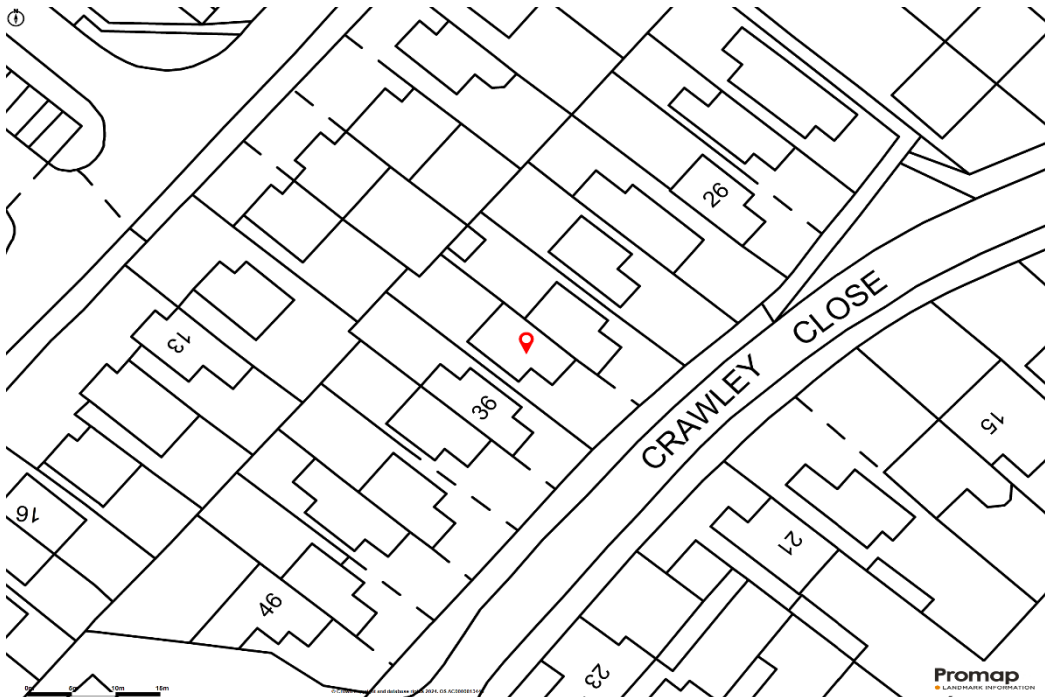




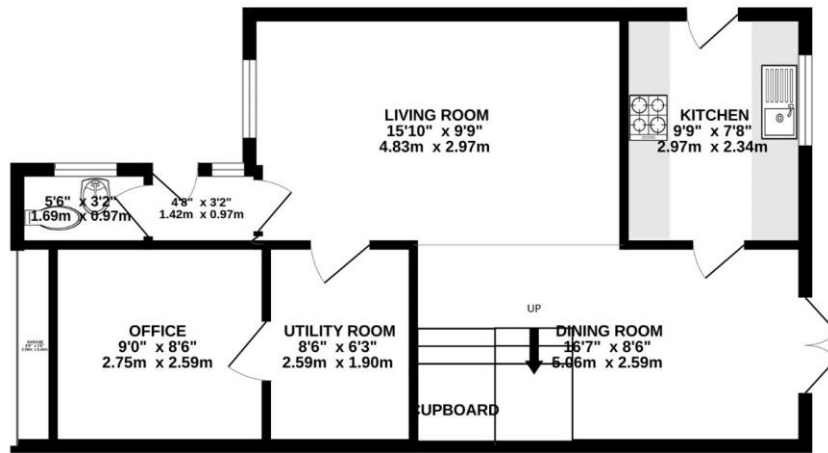
Low Maintenance Rear Garden



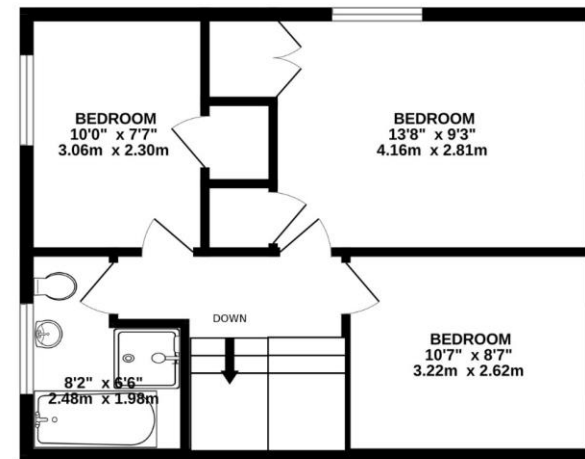




GROUND FLOOR
544 sq.ft. (50.6 sq.m.) approx.



1ST FLOOR
449 sq.ft. (41.7 sq.m.) approx.



TOTAL FLOOR AREA : 993 sq.ft. (92.2 sq.m.) approx.

Whilst every attempt has been made to ensure the accuracy of the floorplan contained here, measurements of doors, windows, rooms and any other items are approximate and no responsibility is taken for any error, omission or mis-statement. This plan is for illustrative purposes only and should be used as such by any prospective purchaser. The services, systems and appliances shown have not been tested and no guarantee as to their operability or efficiency can be given.
Made with Metropix ©2024

Harpenden Office | 01582 768666 | harpenden@frosts.co.uk | 6A Leyton Road, Harpenden, AL5 2TL

These particulars are a general guide only. They do not form part of any contract. Services, systems and appliances have not been tested. Other important information which you will need to know about this property can be found at frosts.co.uk. We may refer you to recommended providers of ancillary services such as Conveyancing, Financial Services, Insurance and Surveying. We may receive a commission payment fee or other benefit (known as a referral fee) for recommending their services. You are not under any obligation to use the services of the recommended provider. The ancillary service provider may be an associated company of Frost's Estate Agents.

To conform with the Money Laundering Regulations 2019, we are required to confirm the identity of all clients. We use the services of Lifetime Legal Ltd who will contact you directly at an agreed time to do this. There is a nominal charge of £60 including VAT per transaction payable direct to Lifetime Legal. We are unable to commence marketing before checks are complete.

