



Springfield Crescent, Harpenden, AL5 4LG

Offers Over £600,000

Freehold

Frost's

A well presented three bedroom semi detached family home situated in a popular location within close proximity to excellent local schools.

On the ground floor there are two separate reception rooms, with the living room benefitting from a feature fireplace, a kitchen and conservatory which both overlook and have access to the pretty rear garden. On the first floor there are three good sized bedrooms, a family bathroom and a separate WC. Outside the house is a driveway to the front which gives off street parking and access to the garage, whilst to the rear of the house is a pretty rear garden with patio seating area and large lawn.

Springfield Crescent is close to excellent local schools and is just over a mile away from the centre of Harpenden which offers a wide range of shopping and leisure facilities along with a mainline railway station providing access to London.

Energy Rating D
Council Tax Band E
Freehold

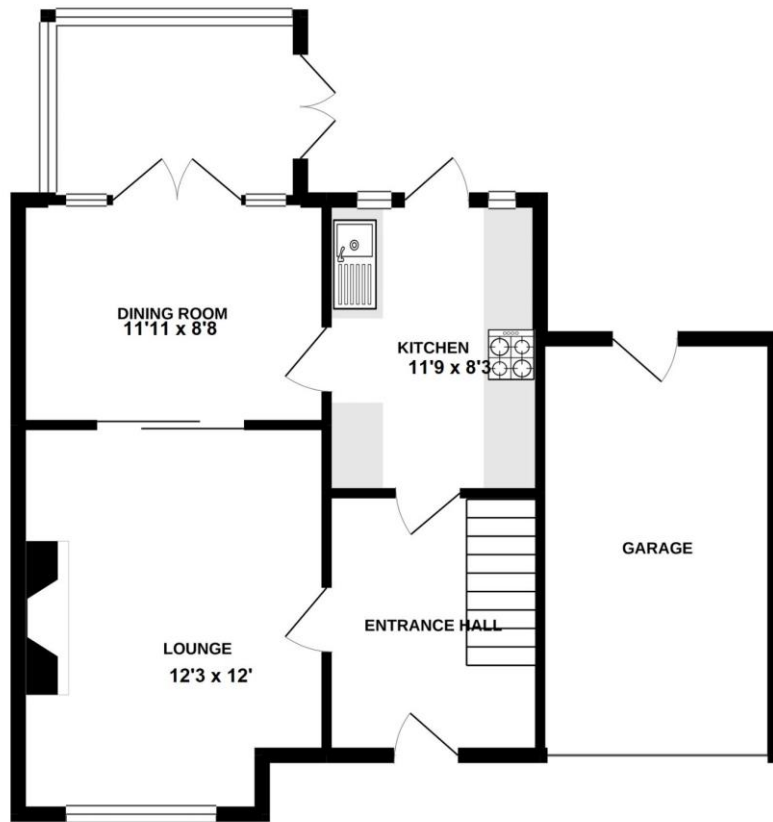
- Three Bedrooms
- Feature Fireplace
- Kitchen
- Conservatory
- Family Bathroom & Separate Cloakroom
- 1090 Sq Ft Approx
- Low Maintenance Rear Garden



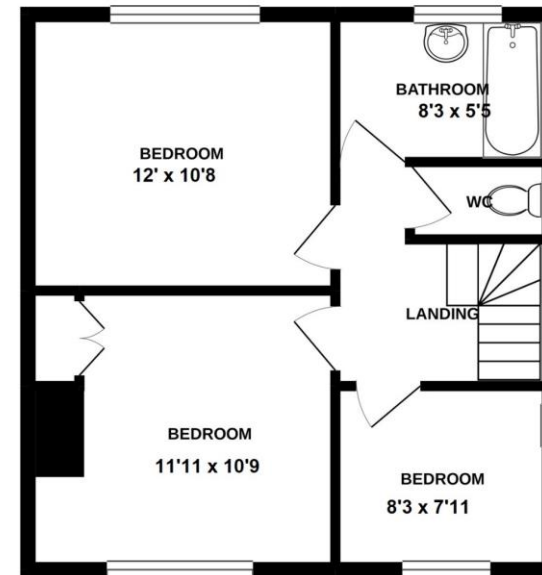


A well presented three bedroom semi detached home.

GROUND FLOOR
662 sq. ft. (61.5 sq. m.) approx.



1ST FLOOR
428 sq. ft. (39.8 sq. m.) approx.



TOTAL FLOOR AREA : 1090 sq. ft. (101.2 sq. m.) approx.

Whilst every attempt has been made to ensure the accuracy of the floorplan contained here, measurements of doors, windows, rooms and any other items are approximate and no responsibility is taken for any error, omission or mis-statement. This plan is for illustrative purposes only and should be used as such by any prospective purchaser. The services, systems and appliances shown have not been tested and no guarantee as to their operability or efficiency can be given.
Made with Metropix ©2020

Harpenden

01582 768666

harpenden@frosts.co.uk

6A Leyton Road, Harpenden, AL5 2TL

These particulars are a general guide only. They do not form part of any contract. Services, systems and appliances have not been tested. We may refer you to recommended providers of ancillary services such as Conveyancing, Financial Services, Insurance and Surveying. We may receive a commission payment fee or other benefit (known as a referral fee) for recommending their services. You are not under any obligation to use the services of the recommended provider. The ancillary service provider may be an associated company of Frost's Estate Agents.

To conform with the Money Laundering Regulations 2019, we are required to confirm the identity of all clients. We use the services of Lifetime Legal Ltd who will contact you directly at an agreed time to do this. There is a nominal charge of £60 including VAT per transaction payable direct to Lifetime Legal. We are unable to commence marketing before checks are complete.

