



Alma Road, St. Albans, Hertfordshire, AL1 3AR

Offers Over £2,000,000

Freehold

Frost's

An exciting and rare opportunity to acquire the Freehold of the entire building of 13 Alma Road, which includes 8 one bedroom apartments that are currently let and which are arranged over four floors.

The impressive and characterful building is ideally positioned within 0.2 miles of the mainline train station and just 0.5 miles to the High Street, making the property an ideal purchase for an investment buyer, thanks to its attractive location for renters.

The apartments are all well-proportioned throughout, with each offering their own individual charm and two of them also offer their own private outside space, whilst all apartments benefit from a communal seating and BBQ area to the rear.

Energy Ratings C / D
Council Tax Bands B
Freehold

Please contact the agent for more information.





Features

- Freehold Purchase
- 8 Individual Apartments
- Excellent Location
- Communal Patio Area
- No Upper Chain

Agent Note

Please note that the photos are a selection of photos taken from a number of the apartments within the block.



An exciting investment opportunity.

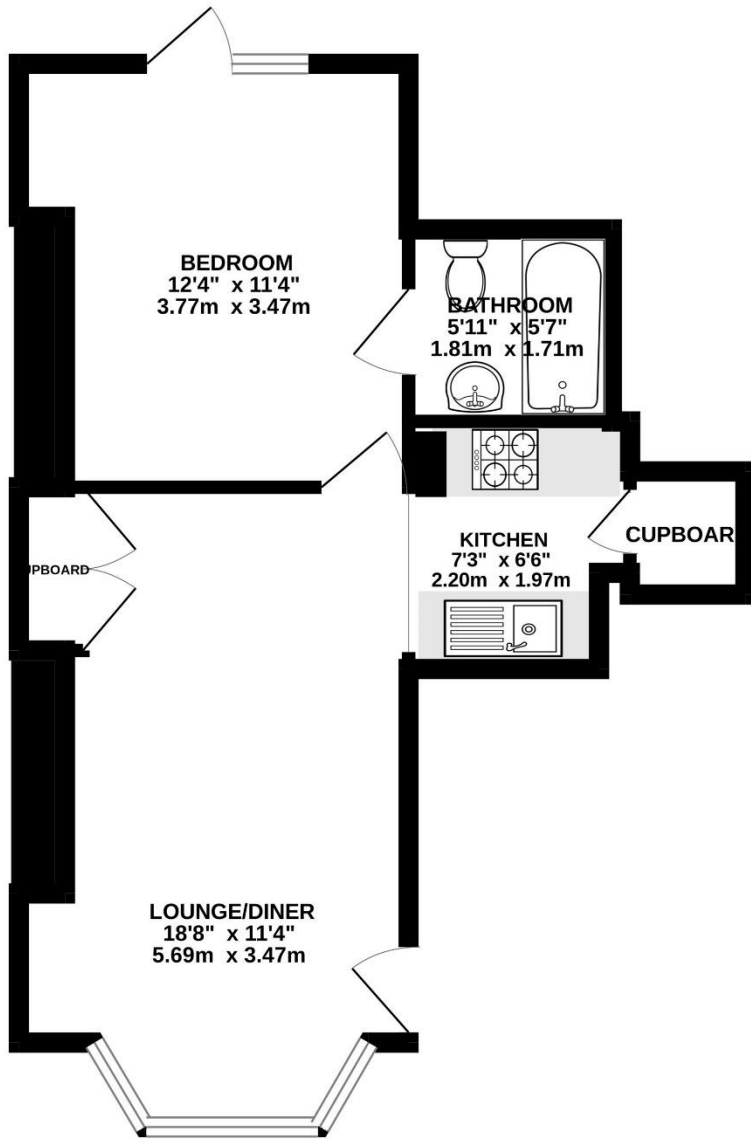




*Eight individual apartments
arranged over four floors.*



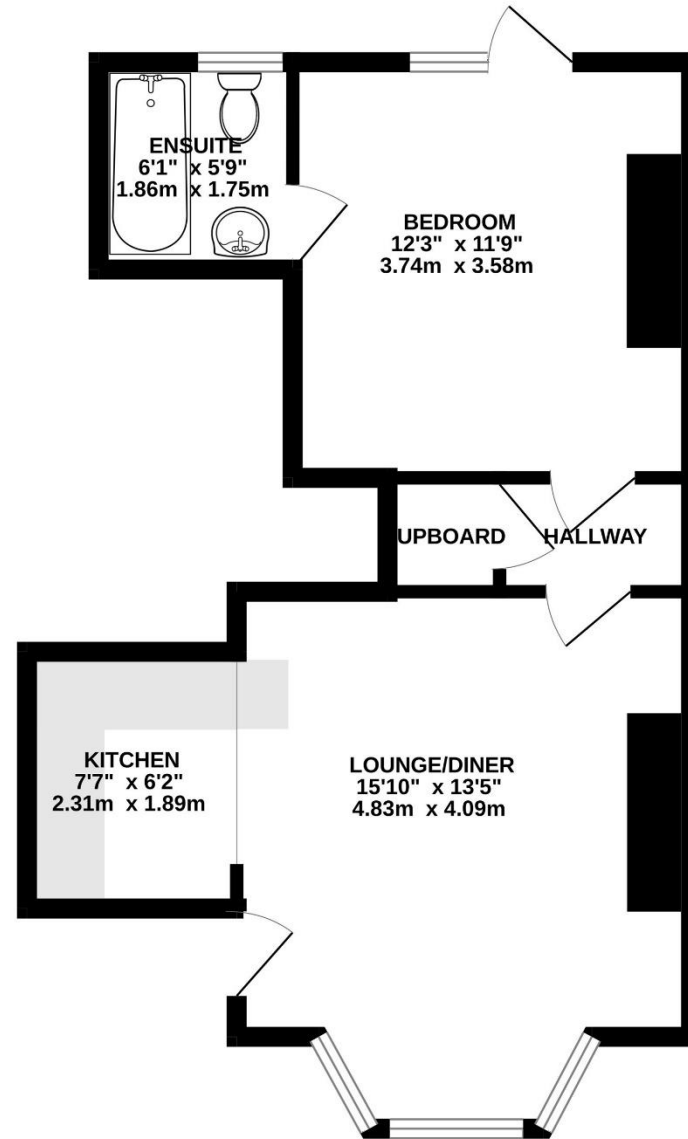
BASEMENT
409 sq.ft. (38.0 sq.m.) approx.



TOTAL FLOOR AREA : 409 sq.ft. (38.0 sq.m.) approx.

Whilst every attempt has been made to ensure the accuracy of the floorplan contained here, measurements of doors, windows, rooms and any other items are approximate and no responsibility is taken for any error, omission or mis-statement. This plan is for illustrative purposes only and should be used as such by any

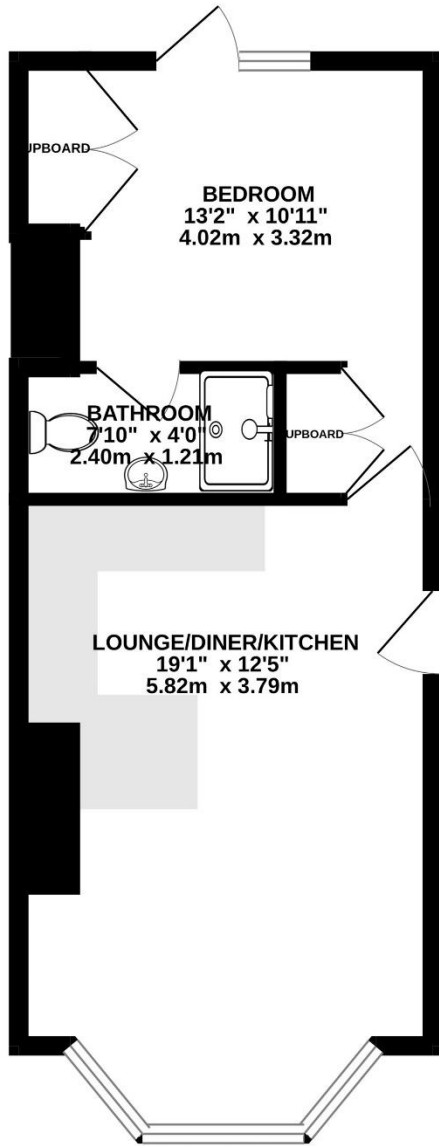
BASEMENT
431 sq.ft. (40.1 sq.m.) approx.



TOTAL FLOOR AREA : 431 sq.ft. (40.1 sq.m.) approx.

Whilst every attempt has been made to ensure the accuracy of the floorplan contained here, measurements of doors, windows, rooms and any other items are approximate and no responsibility is taken for any error, omission or mis-statement. This plan is for illustrative purposes only and should be used as such by any

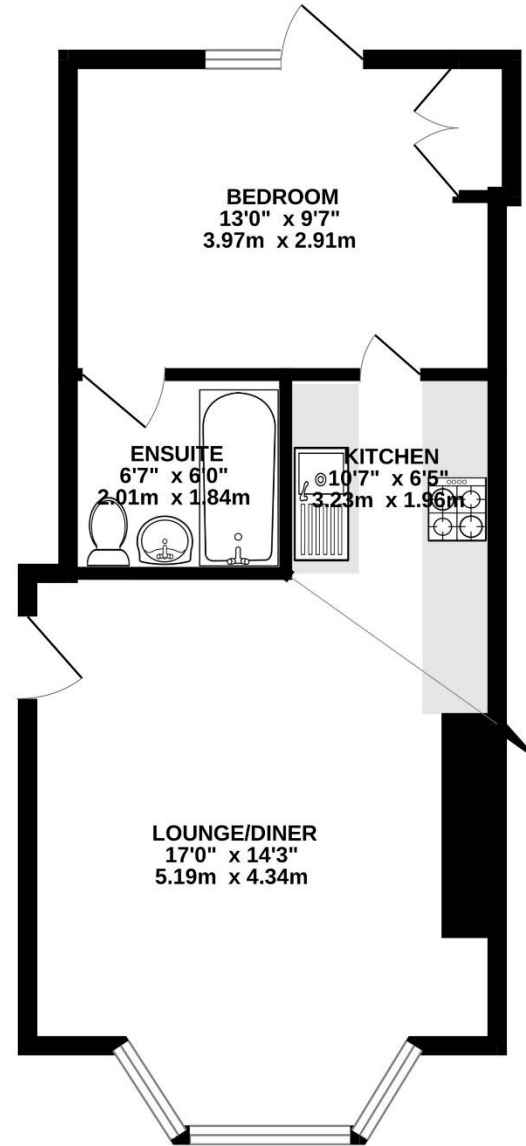
GROUND FLOOR
373 sq.ft. (34.7 sq.m.) approx.



TOTAL FLOOR AREA : 373 sq.ft. (34.7 sq.m.) approx.

Whilst every attempt has been made to ensure the accuracy of the floorplan contained here, measurements of doors, windows, rooms and any other items are approximate and no responsibility is taken for any error, omission or mis-statement. This plan is for illustrative purposes only and should be used as such by any

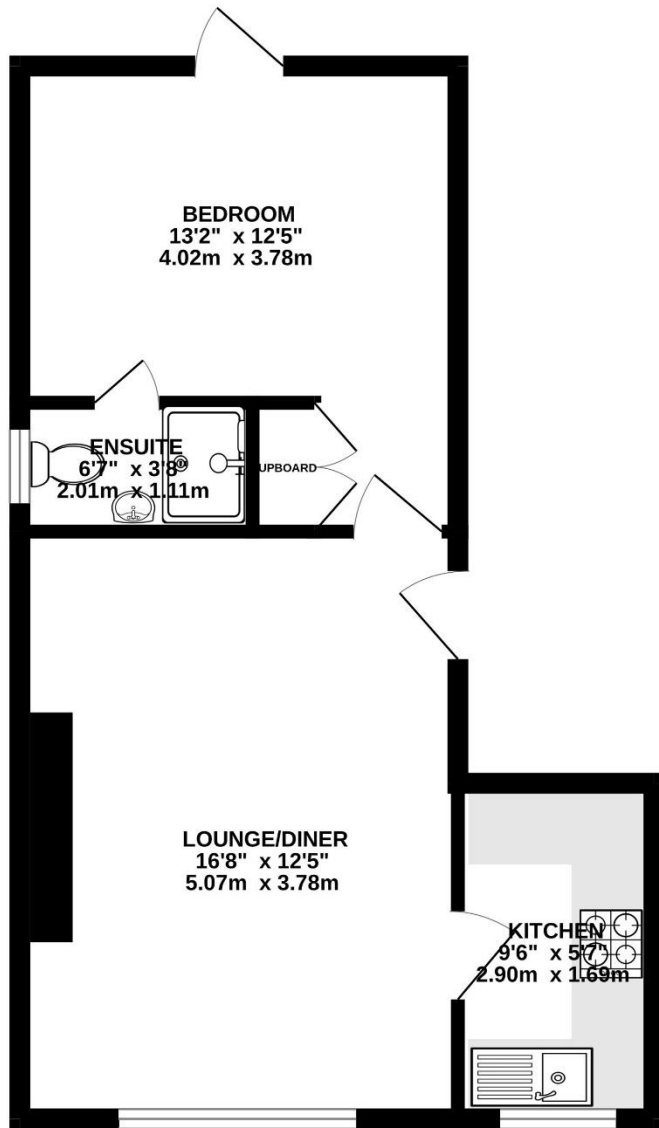
GROUND FLOOR
418 sq.ft. (38.9 sq.m.) approx.



TOTAL FLOOR AREA : 418 sq.ft. (38.9 sq.m.) approx.

Whilst every attempt has been made to ensure the accuracy of the floorplan contained here, measurements of doors, windows, rooms and any other items are approximate and no responsibility is taken for any error, omission or mis-statement. This plan is for illustrative purposes only and should be used as such by any

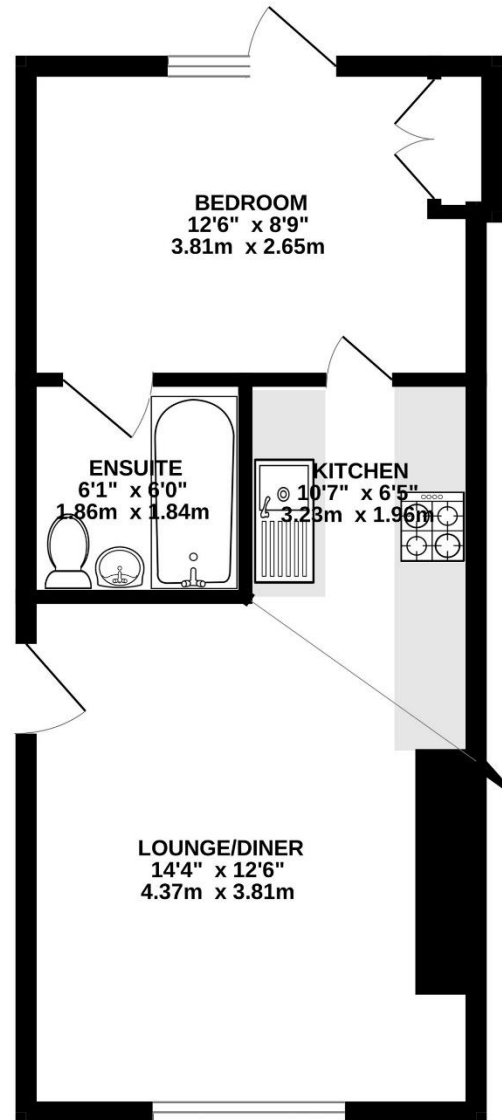
1ST FLOOR
415 sq.ft. (38.6 sq.m.) approx.



TOTAL FLOOR AREA : 415 sq.ft. (38.6 sq.m.) approx.

Whilst every attempt has been made to ensure the accuracy of the floorplan contained here, measurements of doors, windows, rooms and any other items are approximate and no responsibility is taken for any error, omission or mis-statement. This plan is for illustrative purposes only and should be used as such by any

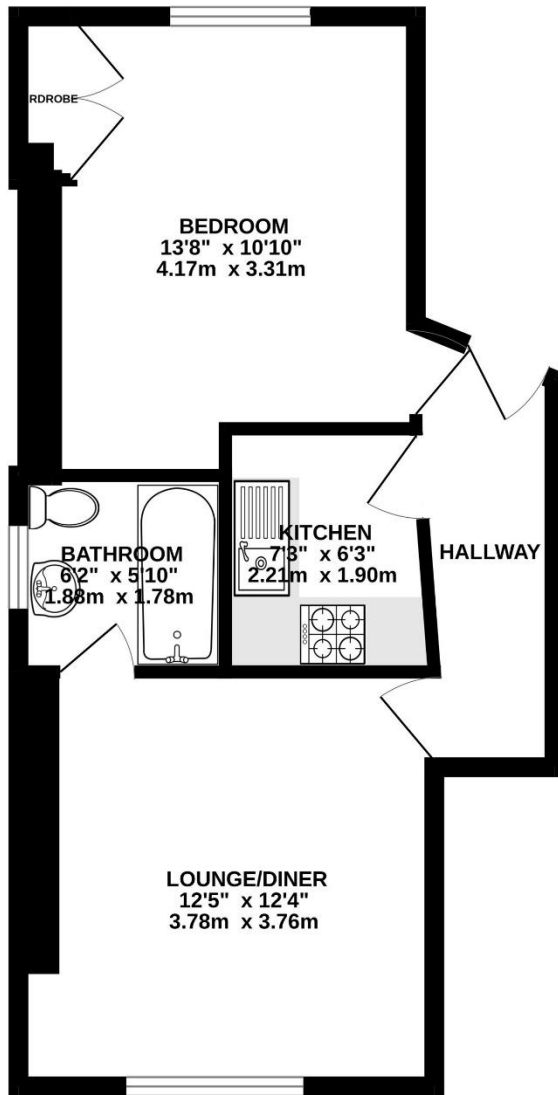
1ST FLOOR
355 sq.ft. (33.0 sq.m.) approx.



TOTAL FLOOR AREA : 355 sq.ft. (33.0 sq.m.) approx.

Whilst every attempt has been made to ensure the accuracy of the floorplan contained here, measurements of doors, windows, rooms and any other items are approximate and no responsibility is taken for any error, omission or mis-statement. This plan is for illustrative purposes only and should be used as such by any

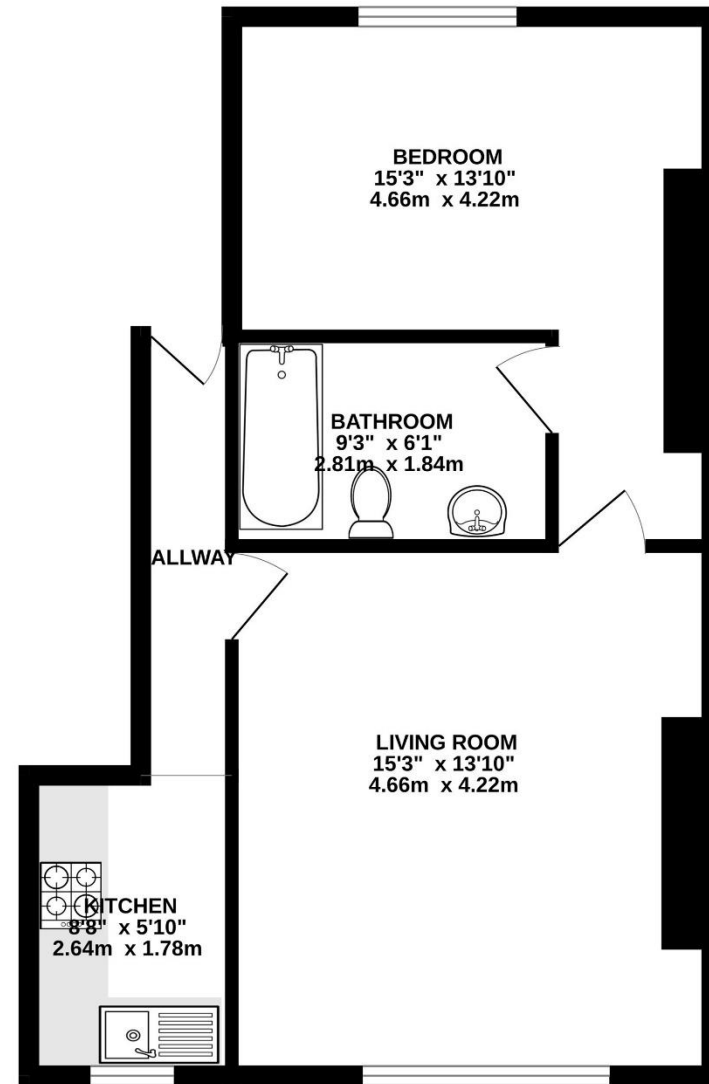
2ND FLOOR
415 sq.ft. (38.5 sq.m.) approx.



TOTAL FLOOR AREA : 415 sq.ft. (38.5 sq.m.) approx.

Whilst every attempt has been made to ensure the accuracy of the floorplan contained here, measurements of doors, windows, rooms and any other items are approximate and no responsibility is taken for any error, omission or mis-statement. This plan is for illustrative purposes only and should be used as such by any

2ND FLOOR
490 sq.ft. (45.5 sq.m.) approx.



TOTAL FLOOR AREA : 490 sq.ft. (45.5 sq.m.) approx.

Whilst every attempt has been made to ensure the accuracy of the floorplan contained here, measurements of doors, windows, rooms and any other items are approximate and no responsibility is taken for any error, omission or mis-statement. This plan is for illustrative purposes only and should be used as such by any

Frost's

Estate and Letting Agents